

Housing②i

Brookside House

Tenant Satisfaction Measures (TSM) Scheme Report March 2025

Prepared by: Acuity Research & Practice



Acuity
intelligence. insight. improvement.

94%

Overall Satisfaction



Acuity was commissioned to undertake, independent satisfaction surveys of all Housing 21's residents, including retirement living and extra care, to collect data on their opinions of, and attitudes towards, their landlord and the services provided.

A survey questionnaire was sent to all residents. The survey was primarily conducted by post, but residents were also given the opportunity to complete the questionnaire online if they wished.

Responses 16

TSM Key Metrics

Keeping Properties in Good Repair



Well Maintained Home

75%



Safe Home

73%



Repairs Last 12 Months

67%



Time Taken Repairs

67%

Respectful & Helpful Engagement



Listens and Acts

64%



Kept Informed

86%



Fairly and with Respect

75%



Complaints Handling

50%

Responsible Neighbourhood Management



Communal Areas

79%



Neighbourhood Contribution

57%



Approach to Anti-Social Behaviour

64%

Year-on-Year Change – Brookside House

Housing 21 undertook a TSM-based survey of its residents in 2023/24. The table to the right compares these past results from this specific Scheme with those for 2024/25. Any increases are green-coloured, while decreases are red.

	2023/24	2024/25
Overall Satisfaction	83%	94% (+10)
Well Maintained Home	92%	75% (-17)
Safe Home	82%	73% (-8)
Housing Management Team	64%	53% (-10)
Communal Areas	90%	79% (-11)
Repairs Last 12 Months	50% *	67% (+17) *
Time Taken Repairs	25% *	67% (+42) *
Neighbourhood Contribution	67% *	57% (-10)
Approach to Anti-Social Behaviour	67% *	64% (-2)
Kept Informed	83%	86% (+2)
Complaints Handling	25% *	50% (+25) *
Listens and Acts	55%	64% (+10)
Fairly and with Respect	92%	75% (-17)

*Less than 10 Responses

What one thing do you like about the services provided by Housing 21?

■ (n=11)



What one thing could Housing 21 do better to improve its services?

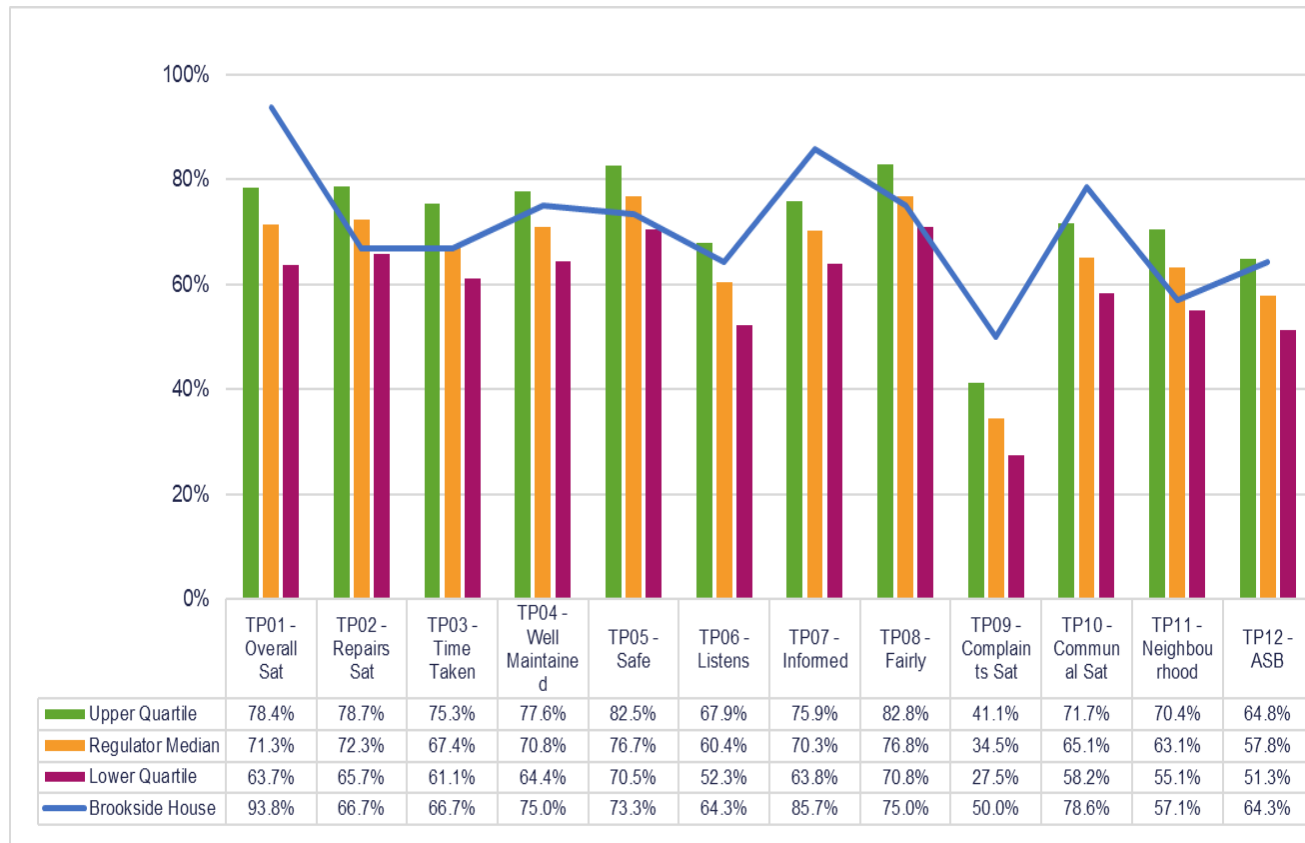
■ (n=12)



Benchmark

This chart shows the satisfaction results of this scheme (depicted by the blue line) in comparison with the Regulator of Social Housing (RSH) data for all other social housing providers.

The quartiles refer to the upper quartile (top 25%), median (average) and lower quartile (bottom 25%) of Low Cost Rental Accommodation (LCRA) properties in the sector.





Care

86%
Overall Satisfaction



This page displays the satisfaction scores for the care survey which was only asked of residents in receipt of care provided by Housing 21.

Responses 14

Care Survey Summary



Safe

93%



Listened To

80%



Independent

90%



Activities and Hobbies

90%



Treat with Respect

93%



Get the Time Needed

100%



Get Help When Needed

92%



Preferences/Trained

100%



Care Plan Meets Needs

100%



Involved in Changes

83%



Time Changes
Communicated

75%



Communication Suits Me

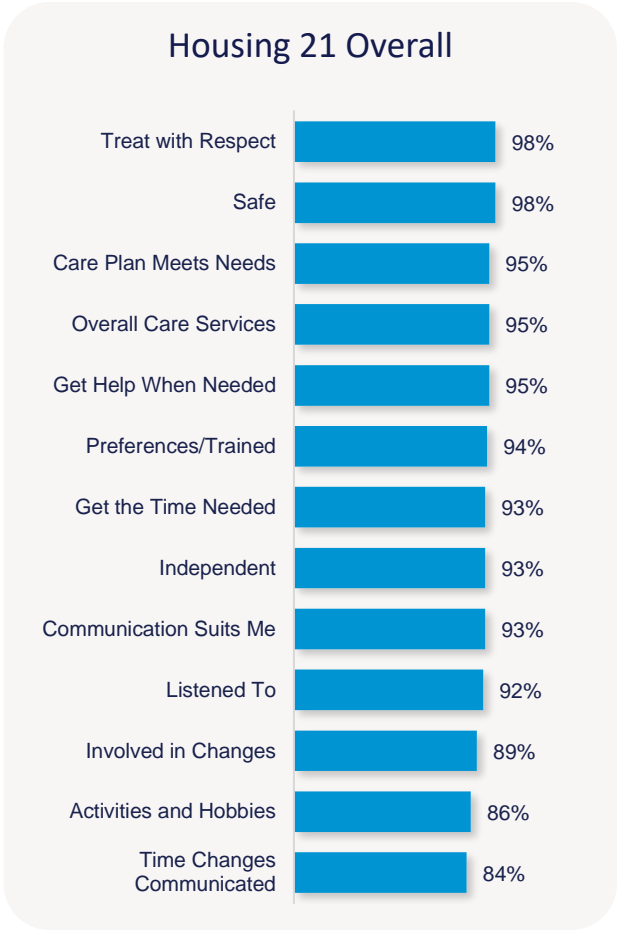
83%

Benchmarking

When considering Housing 21 as a whole, the table on the right shows satisfaction for all Housing 21 Extra Care residents surveyed this year. Satisfaction is high with 95% satisfied with the overall services provided.

All the remaining measures received 90% or more satisfaction, apart from involved in changes (89%), activities and hobbies (86%), and 84% of residents satisfied with changes to the times they receive their care are communicated with.

The chart to the left shows your Scheme in comparison with the overall results for Housing 21, allowing you to benchmark against all other Schemes.



Year-on-Year Change

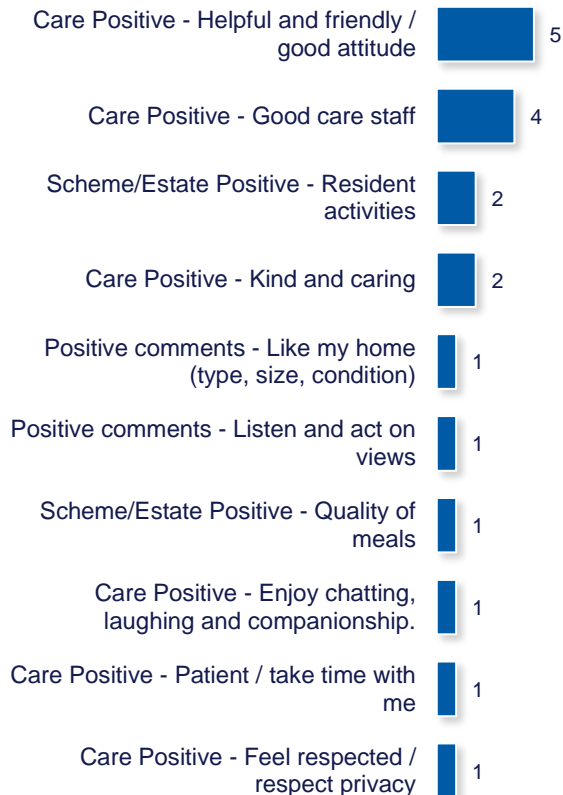
Housing 21 undertook a Care-based survey of its residents in 2023/24. The table to the right compares these past results, with those for 2024/25.

	2023/24	2024/25
Overall Care Services	94%	86% (-8)
Safe	94%	93% (-1)
Listened To	94%	80% (-14)
Independent	94%	90% (-4)
Activities and Hobbies	- *	90% (-)
Treat with Respect	100%	93% (-7)
Get the Time Needed	93%	100% (+7)
Get Help When Needed	100%	92% (-8)
Preferences/Trained	- *	100% (-)
Care Plan Meets Needs	94%	100% (+6)
Involved in Changes	100%	83% (-17)
Time Changes Communicated	79%	75% (-4)
Communication Suits Me	- *	83% (-)

*Less than 10 Responses

What do you like about your care service?

■ (n=12)



Are there any areas of your care service that could be improved?

■ (n=11)



Scheme Performance

Energy Performance Certificate Score (Average score of all properties within the scheme)	78.4
Energy Performance Certificate Rating (Average score of all properties within the scheme)	C
Energy Performance Certificate - Date of assessment	02/10/2019
Overall Care Quality Commission Score	Good
Date of last Care Quality Commission Score	Sep 2018
No. Repairs - Last 12 months (Nov)	105
Total Repairs Spend (£) - Last 12 months (Nov)	£41,453.93
No. Anti-Social Behaviour Cases - Last 12 months (Nov)	2
No. Stage 1 Complaints - Last 12 months (Oct)	2
No. Stage 2 Complaints - Last 12 months (Oct)	0
Total No. Formal Complaints - Last 12 months (Oct)	2

TSM Summary of Approach

A. A summary of achieved sample size (number of responses)	16
B. Timing of survey	September 2024 to November 2024
C. Collection method(s)	Online, Postal, Telephone
D. Sample method	Census
E. Summary of the assessment of representativeness of the sample against the relevant tenant population	N/A
F. Details of any weighting applied to generate the reported perception measures	No weighting applied
G. Role of any named external contractor(s) in collecting, generating, or validating the reported perception measures	Acuity Research & Practice Ltd
H. The number of tenant households within the relevant population that have not been included in the sample frame due to exceptional circumstances	0
I. Reasons for any failure to meet the required sample size requirements	N/A
J. Type and amount of any incentives offered to tenants to encourage survey completion	10 x £50 shopping vouchers
K. Any other methodological issues likely to have a material impact on the tenant perception measures reported	None



This research project was carried out to conform with ISO20252:2019 and the MRS Code of Conduct.

For further information on this report please contact:
Denise Raine: denise.raine@arap.co.uk

Acuity
Tel: 01273 287114
Email: acuity@arap.co.uk
Address: PO Box 395, Umberleigh, EX32 2HL

