



# Aldaniti Court

by Housing 21

Housing 21  
Extra Care Living





“It’s somewhere safe to live, I’m being looked after plus I can have my dog”

“We are happy to know that Extra Care is available should we ever need it in the future. We’ve both experienced difficulties looking after our parents over the last 10 years, and we don’t want to burden that on our children.”

Graham and Marlene,  
Extra Care residents

Scan QR code to  
read Graham and  
Marlene’s Story



# Contents

Welcome to Aldaniti Court	4
About the scheme	4
Is this for me?	4
About your new home	6
Your home, your way	6
Other charges and considerations	6
Your new neighbours	7
About us	7
Our apartments	8
Our bungalows	9
Site plan	10
Next steps	14

# Welcome to Aldaniti Court

Welcome to Aldaniti Court, the latest development by Housing 21, a leading not for profit provider of Retirement Living and Extra Care properties with over 60 years' experience.

Set in the town of Guisborough, Aldaniti Court is an Extra Care development comprising 71 one- and two-bedroom apartments for rental and 12 bungalows for shared ownership.

As well as enjoying the privacy of your own stylish home, you will also have the choice to enjoy the facilities at Aldaniti Court. This includes our communal lounge, buggy store, and landscaped gardens. Pets are very welcome to move in too!

Aldaniti Court has many local amenities including, supermarkets, shops, and a pharmacy. There are also good transport links, with a bus stop just a short walk away which has routes to Middlesbrough and many local areas. The nearest train station, Nunthorpe is under five miles away.



## About the scheme

Aldaniti Court is an Extra Care scheme allowing you to continue to live independently, but with the peace of mind of having on-site Care Workers to help if and when you need it. An on-site Housing and Care Manager is also there to help by organising any necessary repair work with tradespeople, allowing you to spend more time doing things that you enjoy.

In partnership with Vistry, we have installed bat boxes, hedgehog highways, bee bricks, and a variety of bird boxes to support local wildlife.

Additionally, we will provide greenhouses, sheds, and raised planters to encourage residents to undertake their own gardening.

## Is this for me

In our Extra Care properties you will live independently in your new home, exactly as you do now, but with the peace of mind that having help on hand, either now or in the future. Some of the most common reasons people choose to live with us are:



Wanting to be nearer to family



Looking to downsize



Feeling isolated or lonely in your current home







## About your new home

When you choose your apartment or bungalow, you can be assured all our homes have been built to high quality standards, designed to meet your needs both now and in the future.

In addition to fully carpeted apartments, this includes:



Quality fitted kitchens with ceramic hob, extractor and integrated mid-height oven for ease of access



Specialist flooring in the kitchen and bathroom to reduce slip hazards



Mixer taps and raised power points



Apartments have level access showers, and bungalows have both level access shower and a bath



Security optical door viewer

## Your home, your way

The scheme comprises 71 one- and two-bedroom apartments for rent to people who are over 55 with assessed care needs. Apartments are allocated via nomination from Redcar and Cleveland Borough Council, and you must have a local connection to the area. Please complete an application form or speak to the Housing and Care manager if you are interested in renting an apartment.

There are 12 two-bedroom, shared ownership, bungalows available to people over the age of 55 with a care need, or those over 65 without a care need but who are looking for their next home. Please speak to our New Homes team if you wish to apply for a shared ownership bungalow.

Why not scan the QR Code below to read through our Resident Handbook and find out more about living with Housing 21.



Resident Handbook

## Other charges and considerations

All our properties must be occupied by the applicant and cannot be sublet or rented to others. In addition to any rental charges, all our properties may be subject to pay the following:



**Support charge:** this covers the cost of the Housing Manager and hardware costs for the emergency call system that are not covered by Housing Benefit.



**Service charge:** this pays for maintaining shared spaces and estate management. Our service charge is eligible for Housing Benefit. You will also be required to pay for your own utility bills (gas, electric, water), TV licence, Wi-Fi and council tax and we recommend taking out contents insurance.



**Core Support Charge:** This enables the care provider to have a member of staff on site 24 hours a day to respond to the emergency call system and provide assistance in the case of an emergency.



# Your new neighbours

At an Extra Care scheme, you will find that although all our residents are over 55, their lifestyles vary. Some may still be working; others may be retired

Any care and support you receive will be built around you and delivered in your own home. You may be living with a spouse, partner or family member who has additional care needs, allowing you both to continue to live together. Our highly trained staff are committed to providing a professional service. There is a care team on-site 24 hours a day, seven days a week to provide you with care whether it is planned or in an emergency.

# About us

Housing 21 is a leading not for profit provider of Retirement Living and Extra Care for older people of modest means. We operate in 240 local authority areas across England, managing over 23,300 Retirement Living and Extra Care properties and providing over 48,000 hours of social care each week.

Our roots lie with the Royal British Legion (RBL), which in 1921 began to house disabled ex-servicemen and widows and, later, older ex-servicemen and women. In 1964, we became a recognised housing association before separating from the Royal British Legion in 1993 to become Housing 21.



# Our apartments

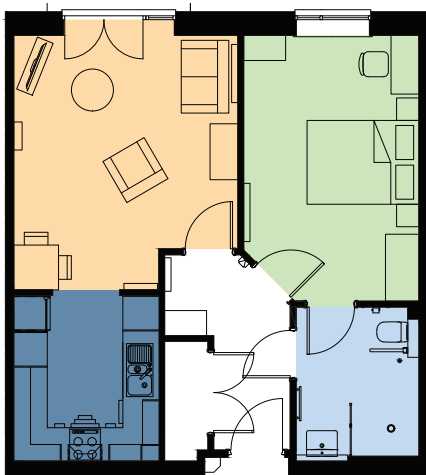
Our one- and two-bedroom apartments are available for rent. Whilst each apartment may vary slightly depending upon its location, all will feature the following:

- One or two-bedrooms
- Open plan kitchen living room
- Bathroom with level access shower accessible from main bedroom as well as the hall way
- Built-in storage

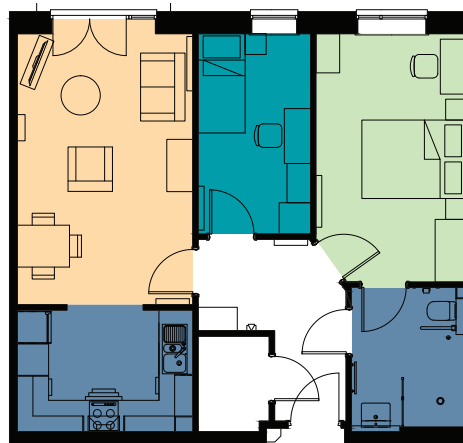
Examples of typical floor plans are shown here:



One-bedroom apartment:



Two-bedroom apartment:



A typical kitchen design:





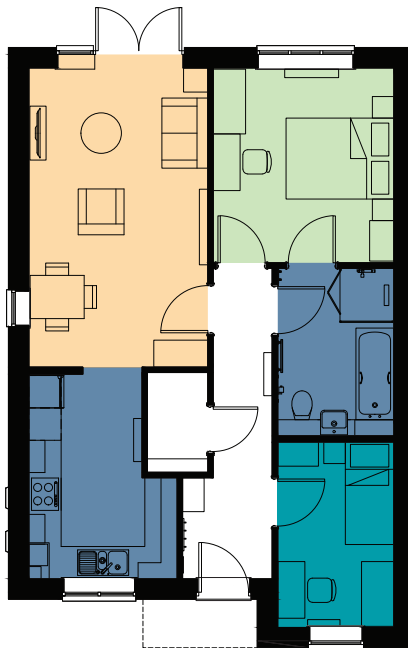
# Our bungalows

Our two-bedroom bungalows are available for shared ownership. Whilst the bungalows may vary slightly depending upon its location, all will feature the following:

- Two-bedrooms
- Open plan kitchen living room
- Bath, and a shower cubicle
- Built-in storage
- Allocated parking

An example of a typical floor plan is shown here:

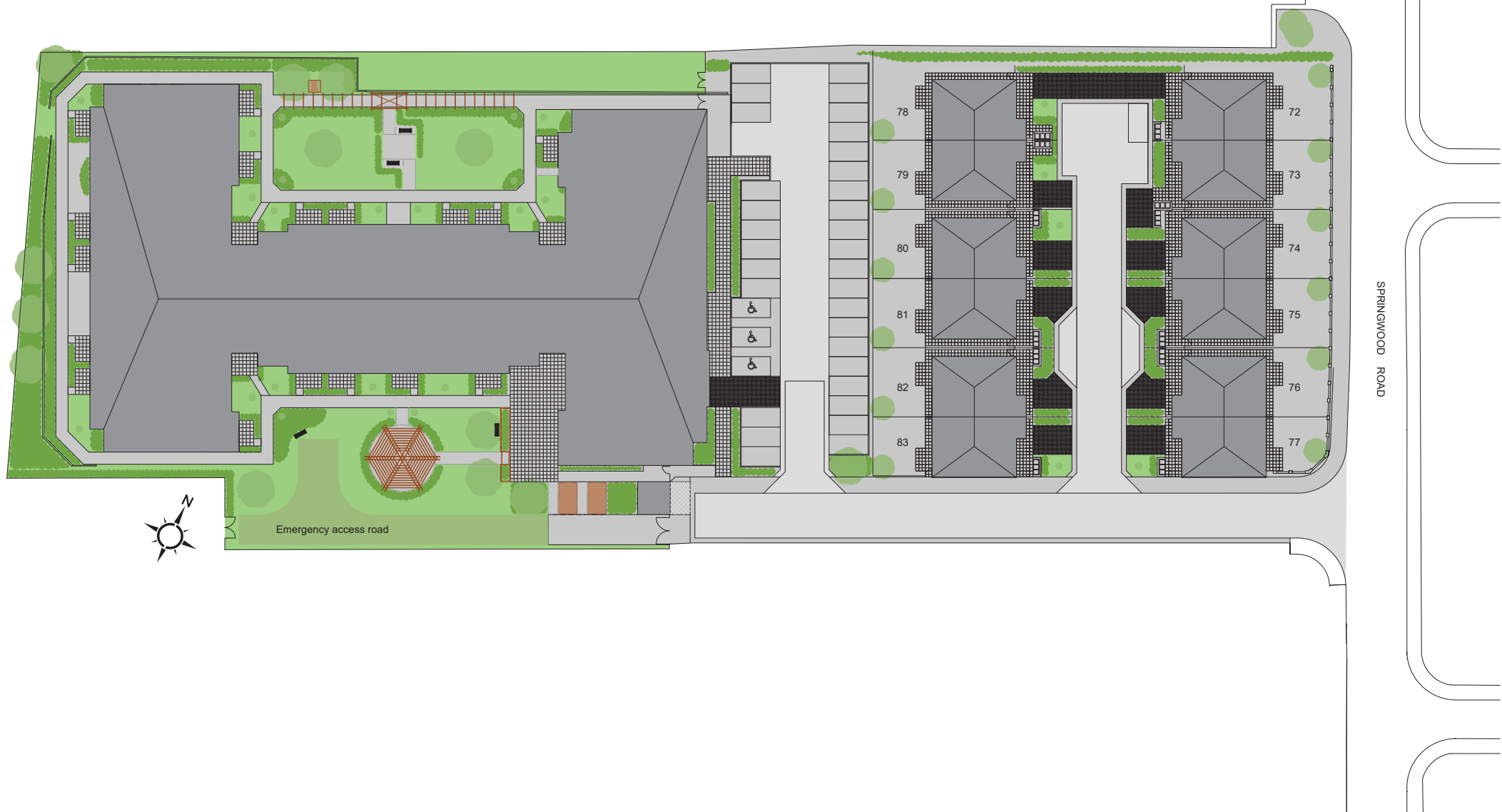
**Two-bedroom bungalow:**



# Site plan

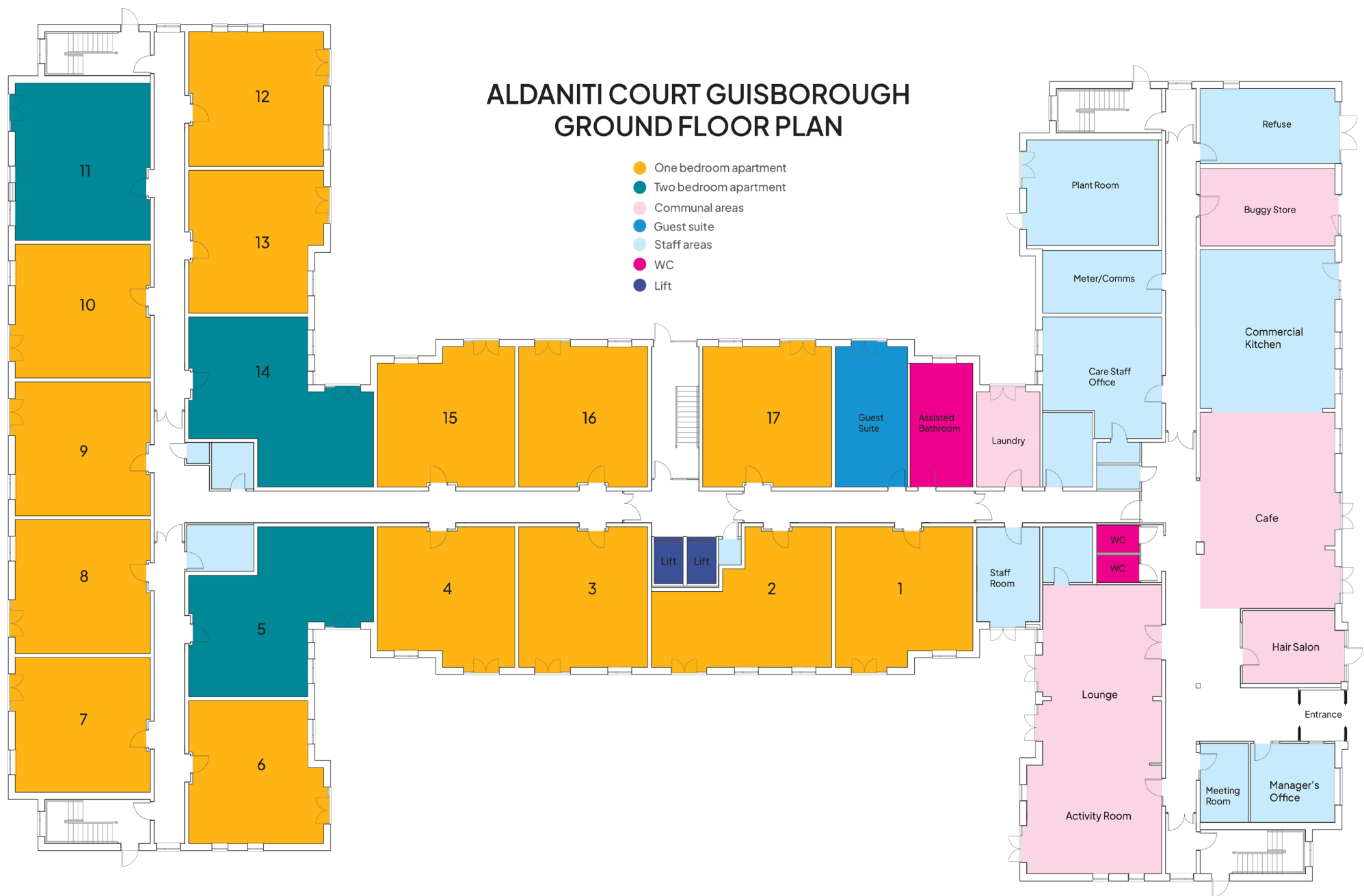
All properties at Aldaniti Court are accessed via Springwood Road.

This is where you will also find our communal areas, including our lounge and garden.

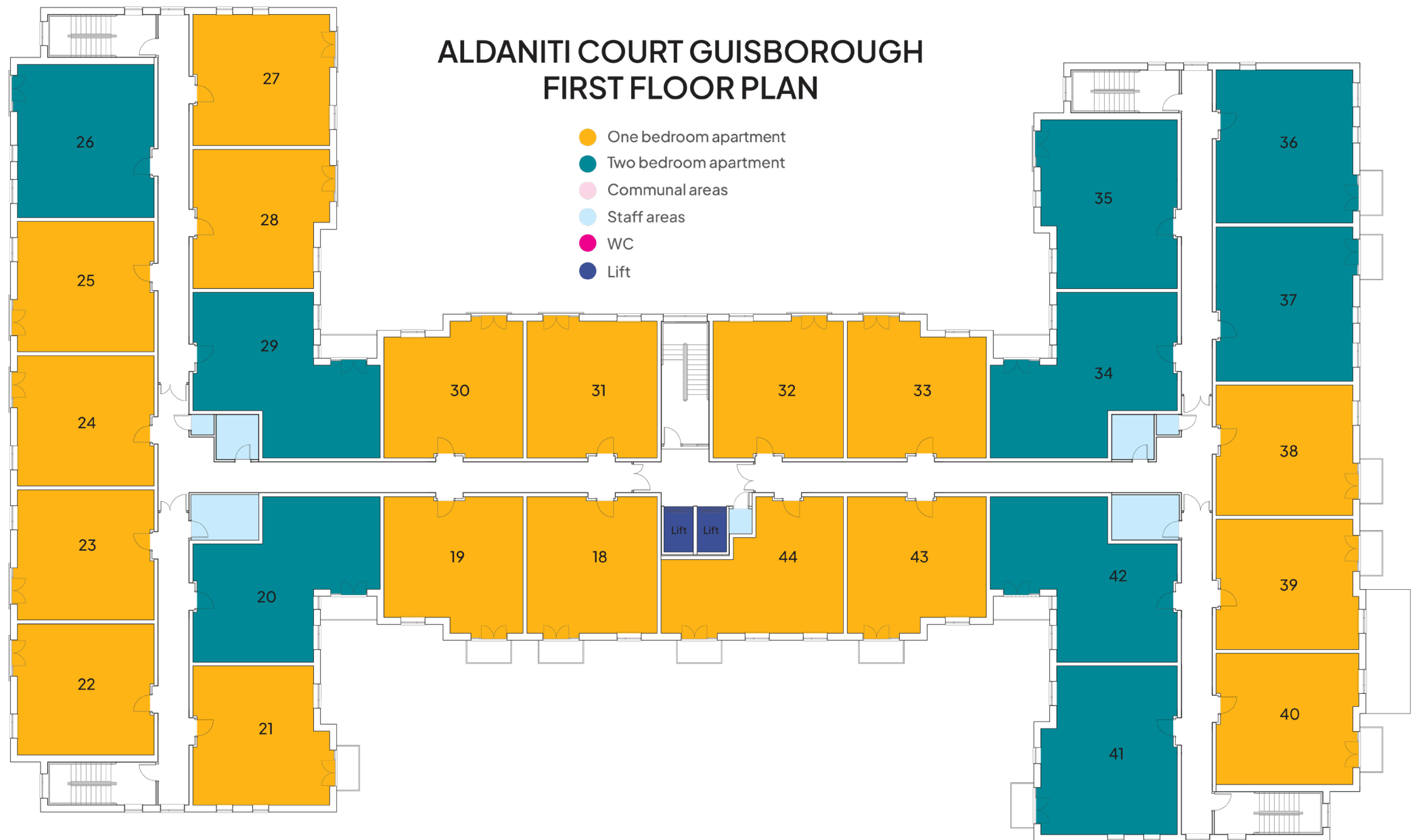




# Ground floor

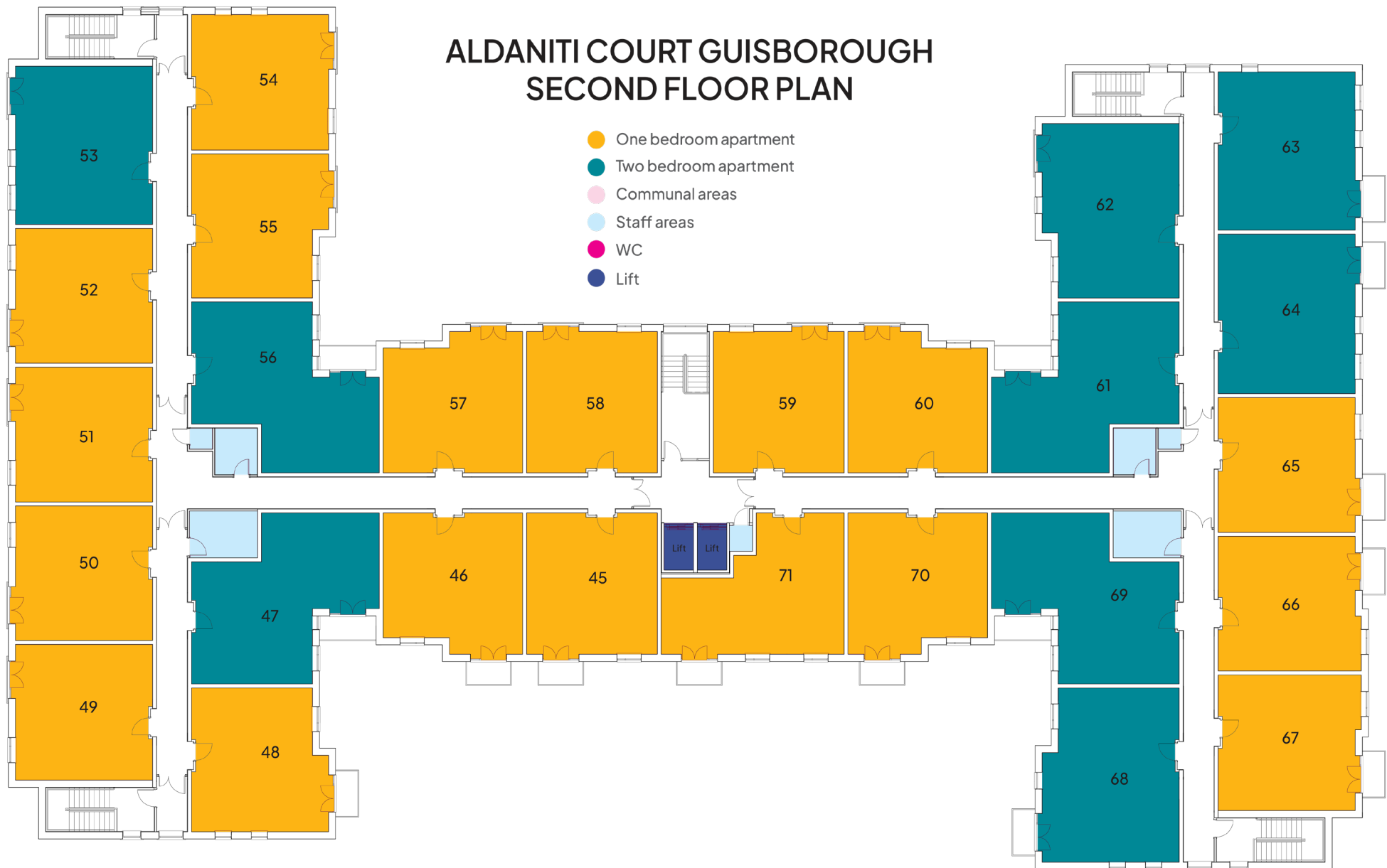


# First floor





# Second floor



## Next steps

If you are interested in living with us, please complete an application form. You can also visit our website to find out more information about the rental or shared ownership process to help you make a more informed decision.  
[www.housing21.org.uk](http://www.housing21.org.uk)

Alternatively, please contact our team to find out more:

Call: 01287 213010  
(Monday – Friday 9am–5pm)  
Email: [info.aldaniticourt@housing21.org.uk](mailto:info.aldaniticourt@housing21.org.uk)

For the latest news and information about Aldaniti Court please scan the QR code below to follow our Housing 21 Facebook page:



# “One of the best things about living here is being with friends”

“Everyone is so friendly, and we often meet up to take part in the various activities taking place at the scheme. It was lovely to be able to share such a special moment with them all.”

Rita, Extra Care resident



Scan QR code to read more of Rita's story





We understand that moving can be a challenge and we are here to help. We have a range of assistance options to support your move.

To arrange a viewing or find out more please contact our team:



01287 213010



[info.aldaniticourt@housing21.org.uk](mailto:info.aldaniticourt@housing21.org.uk)



Monday - Friday, 9am - 5pm. Calls charged at local rate



Springwood Road, Guisborough, TS14 7FE

This brochure can be provided in a different format, such as large print, Braille or another language. Please contact: [communications@housing21.org.uk](mailto:communications@housing21.org.uk)

Aldaniti Court was developed in partnership with Redcar and Cleveland and Homes England

\*Please note that photographs and CGIs used are for illustration purposes only and show typical Housing 21 schemes



Tricorn House  
51-53 Hagley Road  
Birmingham B16 8TP  
[housing21.org.uk](http://housing21.org.uk)

Regulated by the Social Housing Regulator Reg. No. L0055  
Community Benefit Society FCA Reg. No. 16791R



Housing 21  
Extra Care Living

